

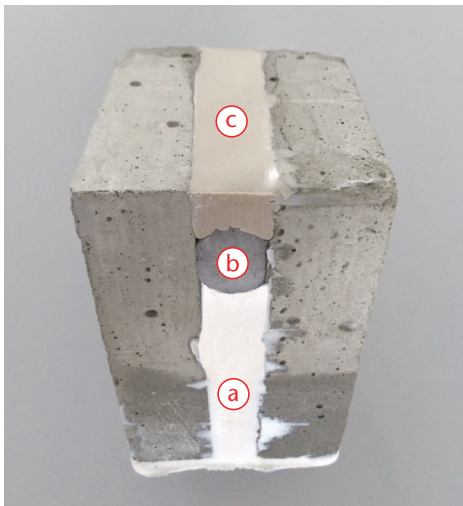


Always in Great Shape

WEBAC® 240 Bseal I

Post-construction sealing measures in concrete, especially the sealing of water-bearing construction joints and movement joints, continually present particular challenges to planners and contractors. The polymer reinforced **WEBAC® 240 Bseal I** was especially developed for these applications and requirements and has the following advantages:

- Strong adhesion to various substrates, no matter if dry, damp or wet
- High chemical resistance, e.g. to alkalis
- Adjustable reaction times
- Minimum change in volume during the drying process
- Safe and easy to use – salt is directly soluble in component Bseal I
- Especially suited for repairing damaged sheet and foil



Systematic Joint Sealing

WEBAC® 240 Bseal I (a) is the ideal system solution for the post-construction and permanent sealing of joints in combination with **WEBAC® Impact Profiles** (b) and the elastic joint filler **WEBAC® 5520N** (c).

Any Questions?
Contact us!

WEBAC-Chemie GmbH
Fahrenberg 22
22885 Barsbüttel/Hamburg
Germany

Tel. +49 40 67057-0
Fax +49 40 6703227
info@webac.de
webac-grouts.com