

Epoxy Putties and Adhesives

## WEBAC® 4501

► WEBAC® 4501 is a quick-setting natural cement.

### Range of application

- Emergency putty when patching cracks
- Patching of brickwork for remedial damp proof course (dpc) against capillary rising moisture

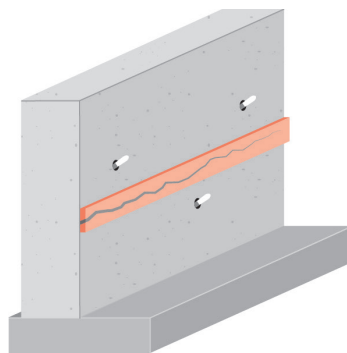
### Properties

- Quick-setting
- High early-strength
- Low shrinkage
- Low chromate

WEBAC-Chemie GmbH  
Fahrenberg 22  
22885 Barsbüttel  
Germany  
Tel. +49 40 67057-0  
Fax +49 40 6703227  
info@webac.de

[www.webac.de](http://www.webac.de)

### Exemplary application



*Patching of cracks*

## ► Technical Information

All the data indicated in this technical data sheet and any related information provided by our employees are of an advisory nature representing our current state of knowledge and in no way binding. As the exact chemical, technical and physical conditions of the actual application are beyond WEBAC's control, this information does not preclude examination of the products and/or procedures for the intended application and surface by the user. WEBAC is thus unable to guarantee results. The user is fully responsible for the observation of existing regulations and conditions when using the products. © WEBAC-Chemie GmbH. Version 03/2020

# Epoxy Putties and Adhesives

## WEBAC® 4501

Technical data	Values	
Mixing ratio	3 : 1 parts by volume (cement : water)	
Mixing ratio Quick-set cement mortar	2 : 1 : ¾ parts by volume (cement : sand : water)	
Pot life	≈ 2 min	
Application temperature	> 5 °C / 41 °F	
Compressive strength 20 °C (EN 196-1)	after 15 min	≈ 5 N/mm <sup>2</sup>
	after 28 d	≈ 30 N/mm <sup>2</sup>
Shrinkage Quick-set cement mortar	after 28 d	≈ 700 µm/m

The specified data are values determined under laboratory conditions and are subject to a certain fluctuation. Deviations are possible in practice depending on the respective object situation.

WEBAC-Chemie GmbH  
 Fahrenberg 22  
 22885 Barsbüttel  
 Germany  
 Tel. +49 40 67057-0  
 Fax +49 40 6703227  
 info@webac.de

[www.webac.de](http://www.webac.de)

### ► Technical Information

All the data indicated in this technical data sheet and any related information provided by our employees are of an advisory nature representing our current state of knowledge and in no way binding. As the exact chemical, technical and physical conditions of the actual application are beyond WEBAC's control, this information does not preclude examination of the products and/or procedures for the intended application and surface by the user. WEBAC is thus unable to guarantee results. The user is fully responsible for the observation of existing regulations and conditions when using the products.  
 © WEBAC-Chemie GmbH. Version 03/2020

## Epoxy Putties and Adhesives

# WEBAC® 4501



### Preparatory work

#### Structural analysis:

- Inspection of the substrate
  - Moisture condition (dry, damp or wet)
  - Surface strength (> 1.5 N/mm<sup>2</sup>)
  - Condition of surface (soiled, oily)

#### This provides following information:

- Practicability of work
- Choice of suitable putty/adhesive
- Ensure that the temperature limit is maintained before application
- Remove all dirt, loose and separative substances from the surfaces



### Mixing

- Mix 3:1 parts by volume with clean, clear water to form a plastic putty
- Can be mixed with 0.5 parts by volume quartz sand



### Application instruction

- The mixture must be used completely within the specified pot life
- The pot life/curing time are influenced by the amount of material/layer thickness and the temperature of the material/building structure – higher temperatures accelerate, lower temperatures slow down the reaction



### Application

#### Patching

- Apply the putty/adhesive with a flat trowel
- For patching apply a layer approx. 10 cm wide and at least 3 mm thick to the entire crack area (also consider subsidiary cracks)
- Depending on the crack course, leave approx. 3 – 5 cm long sections at the highest points of the crack unpatched to allow the air in the crack to vent



### Final work and cleaning

- The patching can be removed mechanically as soon as the injection process is completed and the filling material has cured
- Clean the equipment with water

WEBAC-Chemie GmbH  
 Fahrenberg 22  
 22885 Barsbüttel  
 Germany  
 Tel. +49 40 67057-0  
 Fax +49 40 6703227  
 info@webac.de

[www.webac.de](http://www.webac.de)

## Epoxy Putties and Adhesives

# WEBAC® 4501

<b>Product data</b>	
<b>Application</b>	<ul style="list-style-type: none"> <li>• By scraper</li> </ul>
<b>Packing</b>	<p><b>Unit</b> 15 kg</p>
<b>Storage</b>	<ul style="list-style-type: none"> <li>• Between 5 °C / 41 °F and 30 °C / 86 °F</li> <li>• Protect from moisture</li> <li>• In original, sealed containers</li> </ul>

### Occupational safety

The safety regulations of the industrial trade associations and the WEBAC Safety Data Sheets are to be observed at all times when working with this product. Safety data sheets according to Regulation (EC) No. 1907/2006 (REACH) must be accessible to all persons responsible for occupational safety, health protection and the handling of materials. For further information, please see the separate information sheet "Occupational Safety" in our product catalog or [www.webac-grouts.com](http://www.webac-grouts.com).

### Waste disposal

In Germany, empty containers can be disposed of via "Interseroh Dienstleistungs GmbH" observing the respective terms and conditions. It is not possible to dispose of containers at production facilities or delivery warehouses. For more detailed information, please see the separate information sheet "Information on the disposal and return of WEBAC packaging" in our product catalog or [www.webac-grouts.com](http://www.webac-grouts.com) and the safety data sheets.

WEBAC-Chemie GmbH  
Fahrenberg 22  
22885 Barsbüttel  
Germany  
Tel. +49 40 67057-0  
Fax +49 40 6703227  
[info@webac.de](mailto:info@webac.de)

[www.webac.de](http://www.webac.de)