

Injection Packers

WEBAC® Injection Packers

Range of application

- Sealing of buildings
- Crack repair
- Stabilization of structures
- Soil stabilization

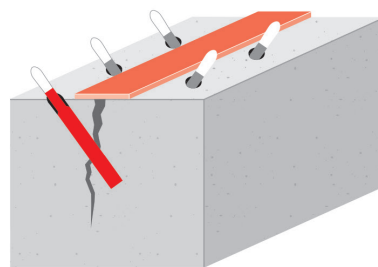
Suitable for

- PU injection foam resins
- PU combi injection resins
- PU injection resins
- PU casting foam resins
- Acrylate gels
- Silicate injection solutions
- Epoxy injection resins

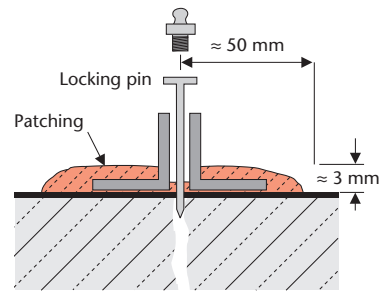
Properties

- Compatibility of the packers with injection material
- Good fastening in the building component
- Corrosion resistance
- High pressure resistance
- Shut-off option towards the building component
- Available with zerk head/button head fitting and high-pressure or low-pressure fitting

Examples



Mechanical packers



Surface Packer

Technical Information

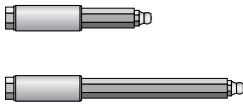
All the data indicated in this technical data sheet and any related information provided by our employees are of an advisory nature representing our current state of knowledge and in no way binding. As the exact chemical, technical and physical conditions of the actual application are beyond WEBAC's control, this information does not preclude examination of the products and/or procedures for the intended application and surface by the user. WEBAC is thus unable to guarantee results. The user is fully responsible for the observation of existing regulations and conditions when using the products.
© WEBAC-Chemie GmbH. Version 03/2024

Injection Packers

WEBAC® Injection Packers

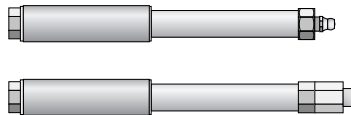
Drill hole packers

WEBAC® Mechanical Packer Type S



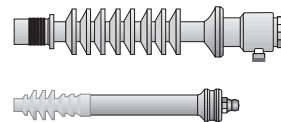
- Easy to handle
- Economical use

WEBAC® Mechanical Packer Type R



- Variable use
- Can also be equipped with button-head fittings for higher flow rates

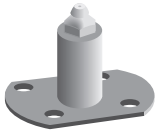
WEBAC® Hammer-in Packer



- Easy to handle
- Not suitable for porous masonry/concrete

Surface packer

WEBAC® Surface Packer plastic



- No drilling required (non-destructive injection)
- Often used on horizontal surfaces

One-day packer

WEBAC® One-Day Packer Type S



- No material reflow from the packer due to non-return valve
- Dismantling and closing possible immediately after the injection
- All operations can be carried out in one day

Injection Packers

WEBAC® Injection Packers

Installation

- The size of the drill holes depends on the conditions on site and the packers used:
 - When using mechanical packers, the drill holes should usually be 1 mm larger than the diameter of the packers
 - When using hammer-in packers, the recommended drill hole size corresponds to the diameter of the packers
- Drill holes are generally made slanting downwards at an angle of $\approx 30^\circ - 45^\circ$ depending on the wall thickness

For more information, see WEBAC brochures

Final work

- Dismount the drill hole packers/surface packers
- Knock off the hammer-in packers and, if applicable, remove the patching

Cleaning

- **WEBAC® Mechanical Packers Type R** can be rinsed with the flushing pump after application of injection gels and reused if necessary

Storage

- Protected from moisture and mechanical damage

WEBAC-Chemie GmbH
Fahrenberg 22
22885 Barsbüttel
Germany
Tel. +49 40 67057-0
Fax +49 40 6703227
info@webac.de

www.webac.de

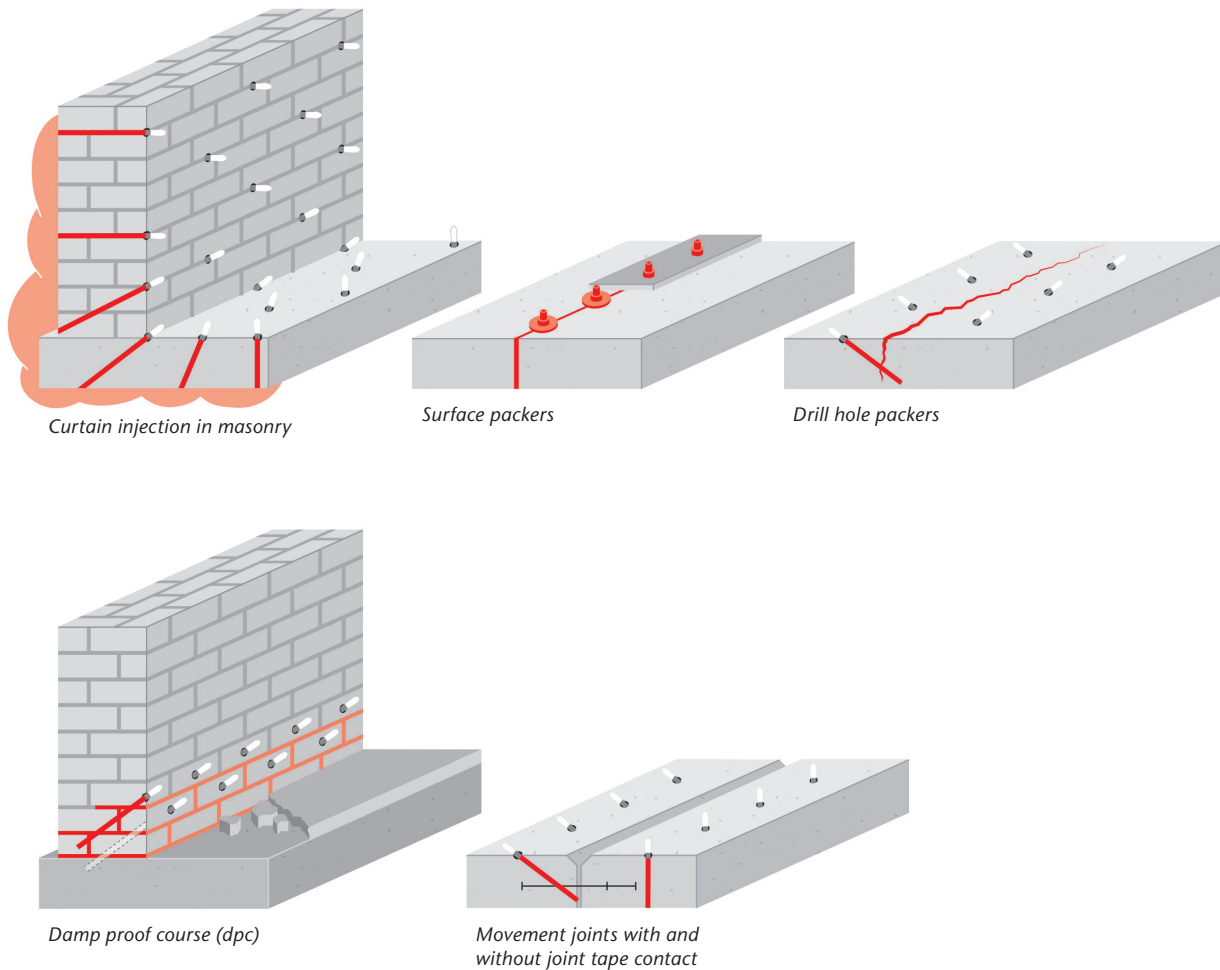
Technical Information

All the data indicated in this technical data sheet and any related information provided by our employees are of an advisory nature representing our current state of knowledge and in no way binding. As the exact chemical, technical and physical conditions of the actual application are beyond WEBAC's control, this information does not preclude examination of the products and/or procedures for the intended application and surface by the user. WEBAC is thus unable to guarantee results. The user is fully responsible for the observation of existing regulations and conditions when using the products.
© WEBAC-Chemie GmbH. Version 03/2024

Injection Packers

WEBAC® Injection Packers

Examples for positioning of drill holes



WEBAC-Chemie GmbH
Fahrenberg 22
22885 Barsbüttel
Germany
Tel. +49 40 67057-0
Fax +49 40 6703227
info@webac.de

www.webac.de

Occupational safety

The safety regulations of the industrial trade associations and the WEBAC Safety Data Sheets are to be observed at all times when working with this product. Safety data sheets according to Regulation (EC) No. 1907/2006 (REACH) must be accessible to all persons responsible for occupational safety, health protection and the handling of materials. For further information, please see the separate information sheet "Occupational Safety" in our product catalog or www.webac.com.

Waste disposal

It is not possible to dispose of containers at production facilities or delivery warehouses. For more detailed information, please see the separate information sheet "Disposal Notes" in our product catalog or www.webac.com and the safety data sheets.

Technical Information

All the data indicated in this technical data sheet and any related information provided by our employees are of an advisory nature representing our current state of knowledge and in no way binding. As the exact chemical, technical and physical conditions of the actual application are beyond WEBAC's control, this information does not preclude examination of the products and/or procedures for the intended application and surface by the user. WEBAC is thus unable to guarantee results. The user is fully responsible for the observation of existing regulations and conditions when using the products.
© WEBAC-Chemie GmbH. Version 03/2024