

## PU Injection Resins

**WEBAC® 1403P** **CE**



### Range of application

- Crack injection in components according to DIN EN 1504-5
- Injection of injection tubes (National Test Certificate)
- Repair of waste water systems
- Sealing of construction joints
- Sealing of foundation pits

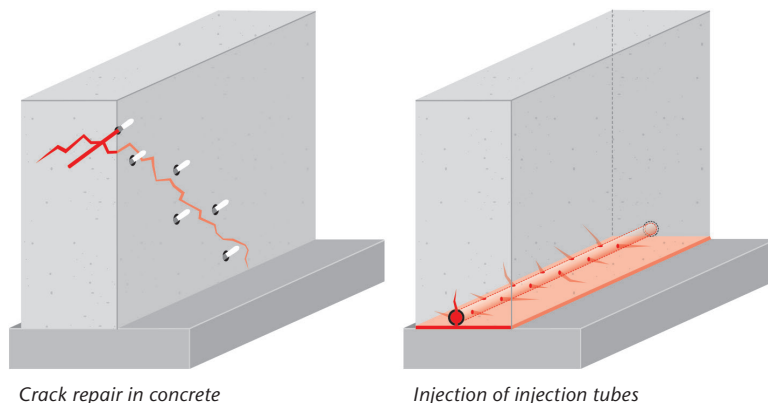
### Properties

- Polyurethan-based injection resin
- Fine-pored closed cellular foam
- Low viscosity
- Good elasticity
- High chemical resistance
- Adjustable reaction time (accelerator **WEBAC® B14**)
- With accelerator also suitable for use at low temperatures
- Total solid\*

### Test certificates

- Declaration of performance in accordance with the Construction Products Regulation (system 2+)
- Certificate of conformity of the factory production control
- Test certificate according to KTW-BWGL recommendations: sealants, lubricants
- National Test Certificate for **WEBAC® Injection Tube AB** in combination with **WEBAC® 1403P**
- Environmental Product Declaration (EPD)
- List of chemical resistance

### Examples



\*according to test method by Deutsche Bauchemie e.V. (German Industry Association for Manufacturers of Construction Chemicals)

## Technical Information

All the data indicated in this technical data sheet and any related information provided by our employees are of an advisory nature representing our current state of knowledge and in no way binding. As the exact chemical, technical and physical conditions of the actual application are beyond WEBAC's control, this information does not preclude examination of the products and/or procedures for the intended application and surface by the user. WEBAC is thus unable to guarantee results. The user is fully responsible for the observation of existing regulations and conditions when using the products.  
© WEBAC-Chemie GmbH. Version 03/2024

## PU Injection Resins

# WEBAC® 1403P CE

Technical data	Values			
Mixing ratio	1 : 1 parts by volume			
Density, 20 °C (DIN ISO 2811)	Comp. A Comp. B	≈ 1.0 g/cm³ ≈ 1.1 g/cm³		
Pot life (WEBAC test specification based on DIN ISO 9514)		30 °C ≈ 80 min	23 °C ≈ 120 min	12 °C ≈ 140 min
Application temperature Building structure and material	> 5 °C			
Viscosity of mixture (WEBAC test specification based on DIN ISO 3219)		30 °C ≈ 80 mPa·s	23 °C ≈ 105 mPa·s	12 °C ≈ 190 mPa·s
Reaction time with 5% water Start • End • Expansion		21 °C ≈ 2 min 15 s • ≈ 5 min 50 s • ≈ 5-times		
Tear strength • Elongation at break 7 d, 21 °C (DIN ISO 527)	≈ 0.46 MPa (N/mm²) • ≈ 36%			
Shore hardness A 7 d, 21 °C (DIN EN 868)	≈ 44/42			
Watertightness (DIN EN 14068)	> 2 bar			
CE classification (DIN EN 1504-5)	U(D1) W(2) (1/2/3) (9/30)			
Fire behavior (DIN 4102-4. 2.3.2)	B2			
GISCODE	PU40			
EPD	EPD-FEI-20220021-IBG1-EN			
Exposure scenarios according to REACH	Assessment of industry standard application			

The specified data are values determined under laboratory conditions and are subject to a certain fluctuation. Deviations are possible in practice depending on the respective object situation.

## Preparatory work

### Structural analysis:

- Preparation of a building condition analysis to determine the actual condition of the structure/component
  - Structure condition
  - Hydrodynamic and hydrostatic conditions
  - Water load
  - Salt load
- Determine the necessary key figures for soil injections (soil expertise/porosity etc.)

### This results in:

- Planning of suitable remediation measures in accordance with the applicable rules and standards
- Selection of suitable material
- Selection of packers/lances
- Arrangement of the boreholes and placement of the packers/lances
- Carrying out a test injection if necessary

## Application instruction

- Injection by 1C or 2C pump
- Make sure the filter in the hopper is clean
- The mixture must be used completely within pot life
- Only use pure WEBAC material without any residues of cleaning agents or other impurity
- The reaction speed is influenced by the temperature of the material and the building structure – higher temperatures accelerate, lower temperatures slow down the reaction

## Mixing

### Application by 1C pump

- Empty component A and B at the given mixing ratio into a mixing vessel (make sure that the containers are completely empty) and mix homogenously
- Transfer mixed material in a new mixing vessel, stir well again and fill into the hopper of the pump

### Application by 2C pump

- Fill component A and B into the respective hoppers
- The components are mixed homogenously in the mixing head

## Application

- Adapt the injection pressure to the nature and condition of the building structure (< 10 bar for low pressure method or high pressure method starting at ≈ 20 bar)
- Continue the injection until resin leaks out from the masonry and/or from the adjacent packers. This is necessary to get an even material distribution
- A secondary injection must be carried out depending on the moisture condition and foam behavior

## Final work and cleaning

- Once the material has cured remove the packers
- Clean the drill holes and close with suitable non-shrinking mortar
- Clean the component surface of patched cracks, grind flat if necessary
- Clean the pump with **WEBAC® Cleaner A**
- Use **WEBAC® Cleaner B** for dissolving cured material but never for flushing pumps
- Observe the technical data sheets of the injection pump and cleaners used
- For detailed information refer to the operating manual of the injection pump

WEBAC-Chemie GmbH  
Fahrenberg 22  
22885 Barsbüttel  
Germany  
Tel. +49 40 67057-0  
Fax +49 40 6703227  
info@webac.de

[www.webac.de](http://www.webac.de)

# PU Injection Resins

## WEBAC® 1403P CE

Product data		
	Comp. A	Comp. B
Delivery form	20 kg	21.3 kg
	9.65 kg	10.25 kg
	5 kg	5.3 kg
Storage	<ul style="list-style-type: none"> <li>Between 5 °C and 30 °C</li> <li>Protected from moisture</li> <li>In original, sealed containers</li> </ul>	
Compatibility	<ul style="list-style-type: none"> <li>Compatible with masonry mortar, concrete, steel, foil, cable sheathing, metal and WEBAC injection materials</li> </ul>	
Resistance	<ul style="list-style-type: none"> <li>Resistant to salts harmful to the building, alkalis and acids in common concentrations in building structures</li> </ul>	

WEBAC-Chemie GmbH  
 Fahrenberg 22  
 22885 Barsbüttel  
 Germany  
 Tel. +49 40 67057-0  
 Fax +49 40 6703227  
 info@webac.de

[www.webac.de](http://www.webac.de)

### Occupational safety

The safety regulations of the industrial trade associations and the WEBAC Safety Data Sheets are to be observed at all times when working with this product. Safety data sheets according to Regulation (EC) No. 1907/2006 (REACH) must be accessible to all persons responsible for occupational safety, health protection and the handling of materials. For further information, please see the separate information sheet "Occupational Safety" in our product catalog or [www.webac.com](http://www.webac.com).

### Waste disposal

In Germany, empty containers can be disposed of via "Interzero Circular Solutions Germany GmbH" observing the respective terms and conditions. It is not possible to dispose of containers at production facilities or delivery warehouses. For more detailed information, please see the separate information sheet "Disposal Notes" in our product catalog or [www.webac.com](http://www.webac.com) and the safety data sheets.