

Epoxy Putties and Adhesives

WEBAC® 4515 CE



- WEBAC® 4515 is a very fast curing epoxy putty, also suitable at low temperatures.

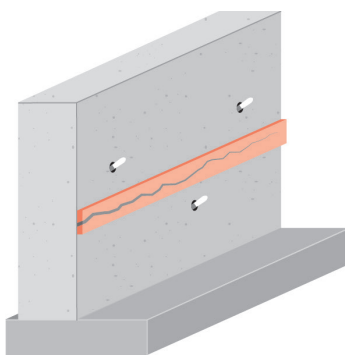
Range of application

- Fast curing epoxy putty for:
 - Concrete protection for floor and wall surfaces according to EN 13813 (CE-Declaration of Performance/4)
 - Patching of cracks
 - Installation of surface packers
- Emergency putty for sealing damaged patching
- Universal putty for sewer repair
- Patching of cracks for injection according to EN 1504-5

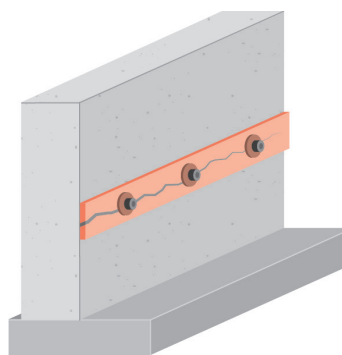
Properties

- Cures also at low temperatures down to -5°C / 23°F
- Highly pressure resistant
- Fast curing
- Adjustable reaction time (accelerator **WEBAC® B45**)
- Total solid*

Examples



Patching of cracks



Installation of surface packers

*according to test method by Deutsche Bauchemie e.V. (German Industry Association for Manufacturers of Construction Chemicals)

WEBAC-Chemie GmbH
Fahrenberg 22
22885 Barsbüttel
Germany
Tel. +49 40 67057-0
Fax +49 40 6703227
info@webac.de

www.webac.de

► Technical Information

All the data indicated in this technical data sheet and any related information provided by our employees are of an advisory nature representing our current state of knowledge and in no way binding. As the exact chemical, technical and physical conditions of the actual application are beyond WEBAC's control, this information does not preclude examination of the products and/or procedures for the intended application and surface by the user. WEBAC is thus unable to guarantee results. The user is fully responsible for the observation of existing regulations and conditions when using the products.
© WEBAC-Chemie GmbH. Version 03/2020

Epoxy Putties and Adhesives

WEBAC® 4515 CE

Technical data	Values			
Mixing ratio	1 : 1 parts by weight			
Density, 20 °C / 68 °F (ISO 2811)	Comp. A Comp. B	≈ 1.5 g/cm³ ≈ 1.8 g/cm³		
Pot life		30 °C / 86 °F ≈ 6 min	20 °C / 68 °F ≈ 10 min	12 °C / 54 °F ≈ 20 min
Application temperature Building structure and material	> 1 °C / 34 °F			
Curing time, 21 °C / 70 °F		5 mm layer thickness ≈ 100 min	8 mm layer thickness ≈ 45 min	
Adhesive strength on concrete 24 h, 21 °C / 70 °F (EN 1542)	dry damp	≈ 3.5 N/mm² ≈ 2.4 N/mm²		
Compressive strength 7 d, 21 °C / 70 °F (ISO 604)	≈ 90 N/mm²			
Bending tensile strength 7 d, 21 °C / 70 °F (ISO 178)	≈ 50 N/mm²			
Shore hardness D 7 d, 21 °C / 70 °F (EN 868)	≈ 87/84			
CE classification (EN 13813)	SR - B2.0			
Fire behavior	minimum B2 according to DIN 4102-4. 2.3.2			
GISCODE	RE1			
EPD	EPD-DBC-20130033-IBE1-DE			
Exposure scenarios according to REACH	Assessment of industry standard application			

The specified data are values determined under laboratory conditions and are subject to a certain fluctuation. Deviations are possible in practice depending on the respective object situation.

WEBAC-Chemie GmbH
Fahrenberg 22
22885 Barsbüttel
Germany
Tel. +49 40 67057-0
Fax +49 40 6703227
info@webac.de

www.webac.de

Epoxy Putties and Adhesives

WEBAC® 4515 CE



Preparatory work

Structural analysis:

- Inspection of the substrate
 - Moisture condition (dry, damp or wet)
 - Surface strength ($> 1.5 \text{ N/mm}^2$)
 - Condition of surface (soiled, oily)

This provides following information:

- Practicability of work
- Choice of suitable putty/adhesive
- Ensure that the temperature limit is maintained before application
- Remove all dirt, loose and separative substances from the surfaces
- Roughen the surfaces before working on tiles, ceramics or stoneware to improve adhesion



Mixing

- Empty component B in the container of component A (make sure the containers are completely empty) and mix homogeneously
- Transfer the mixed material to another clean bucket and stir briefly



Application instruction

- The mixture must be used completely within the specified pot life
- Only use pure WEBAC material without any residues of cleaning agents or other impurity
- The pot life/curing time are influenced by the amount of material/layer thickness and the temperature of the material/building structure – higher temperatures accelerate, lower temperatures slow down the reaction



Application

Patching

- Apply the putty/adhesive with a flat trowel
- For patching apply a layer approx. 10 cm wide and at least 3 mm thick to the entire crack area (also consider subsidiary cracks)
- Depending on the crack course, leave approx. 3 – 5 cm long sections at the highest points of the crack unpatched to allow the air in the crack to vent



Final work and cleaning

- The patching can be removed mechanically as soon as the injection process is completed and the filling material has cured (e.g. by hot air gun)
- Clean the equipment with **WEBAC® Cleaner A**
- Use **WEBAC® Cleaner B** for dissolving cured material
- Observe the technical data sheets of the cleaners used

Epoxy Putties and Adhesives

WEBAC® 4515 CE

Product data

Application	• By flat trowel		
Material consumption	Patching	≈ 500 g/m	
Packing		Comp. A 1 kg	Comp. B 1 kg
Storage	<ul style="list-style-type: none"> Between 8 °C / 46 °F and 25 °C / 77 °F Protect from moisture In original, sealed containers 		
Compatibility/Resistance	<ul style="list-style-type: none"> Compatible with masonry mortar, concrete, steel, foil, cable sheathing, metal and WEBAC injection materials Specially resistant to structurally damaging salts, acids and alkalis 		

Test certificate

- Declaration of performance according to Construction Products Regulation

Occupational safety

The safety regulations of the industrial trade associations and the WEBAC Safety Data Sheets are to be observed at all times when working with this product. Safety data sheets according to Regulation (EC) No. 1907/2006 (REACH) must be accessible to all persons responsible for occupational safety, health protection and the handling of materials. For further information, please see the separate information sheet "Occupational Safety" in our product catalog or www.webac-grouts.com.

Waste disposal

In Germany, empty containers can be disposed of via "Interseroh Dienstleistungs GmbH" observing the respective terms and conditions. It is not possible to dispose of containers at production facilities or delivery warehouses. For more detailed information, please see the separate information sheet "Information on the disposal and return of WEBAC packaging" in our product catalog or www.webac-grouts.com and the safety data sheets.

► Technical Information