

## Epoxy Putties and Adhesives

# WEBAC® 4535



# WEBAC®

### Range of application

- Repairs in shafts and pipes accessible to pedestrians in sewer repair
- Installation of surface packers
- Patching of cracks for injections
- Reprofilling and concrete protection according to DIN EN 13813
- Installation of **WEBAC® Sealing Tape XT**

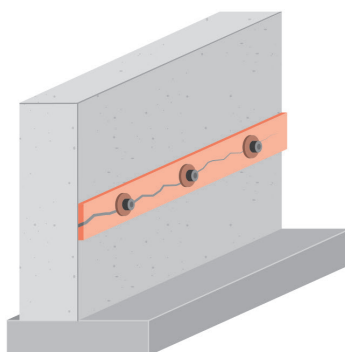
### Properties

- Epoxy-based putty/adhesive
- Good adhesion to concrete, mineral substrates, stoneware – dry, damp
- High mechanical strength
- Fast curing
- Can be mixed with quartz sand for concrete rendering or reprofiling
- Total solid\*

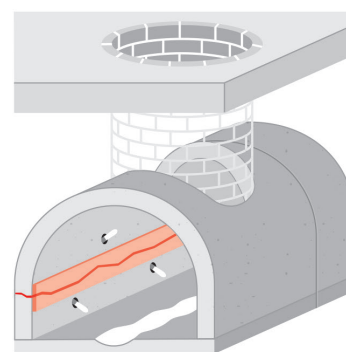
### Test certificates

- Declaration of performance in accordance with the Construction Products Regulation (system 4)
- National Test Certificate for **WEBAC® Sealing Tape XT** in combination with **WEBAC® 4535**
- Test certificate according to KTW recommendations: D1 (large-surface sealants)
- Environmental Product Declaration (EPD)
- List of chemical resistance

### Examples



Installation of surface packers



Putty for sewer repairs

\*according to test method by Deutsche Bauchemie e.V. (German Industry Association for Manufacturers of Construction Chemicals)

WEBAC-Chemie GmbH  
Fahrenberg 22  
22885 Barsbüttel  
Germany  
Tel. +49 40 67057-0  
Fax +49 40 6703227  
info@webac.de

[www.webac.de](http://www.webac.de)

## Technical Information

All the data indicated in this technical data sheet and any related information provided by our employees are of an advisory nature representing our current state of knowledge and in no way binding. As the exact chemical, technical and physical conditions of the actual application are beyond WEBAC's control, this information does not preclude examination of the products and/or procedures for the intended application and surface by the user. WEBAC is thus unable to guarantee results. The user is fully responsible for the observation of existing regulations and conditions when using the products.  
© WEBAC-Chemie GmbH. Version 03/2024

## Epoxy Putties and Adhesives

# WEBAC® 4535 CE

Technical data	Values		
Mixing ratio	2 : 1 parts by weight		
Density, 20 °C (DIN ISO 2811)	Comp. A Comp. B	≈ 1.5 g/cm <sup>3</sup> ≈ 1.3 g/cm <sup>3</sup>	
Bulk density	≈ 1.45 g/cm <sup>3</sup>		
Pot life (WEBAC test specification based on DIN ISO 9514)		20 °C ≈ 15 min	12 °C ≈ 30 min
Application temperature Building structure and material	> 5 °C		
Compressive strength 7 d, 21 °C (DIN ISO 604)	≈ 50 MPa (N/mm <sup>2</sup> )		
Bending tensile strength 7 d, 21 °C (DIN ISO 178)	≈ 45 MPa (N/mm <sup>2</sup> )		
Adhesive strength on concrete 7 d, 21 °C (DIN EN 1542)	dry under water	≈ 2.7 MPa (N/mm <sup>2</sup> ), concrete fracture ≈ 2.2 MPa (N/mm <sup>2</sup> ), concrete fracture	
CE classification (DIN EN 13813)	SR - B2.0		
Fire behavior (DIN 4102-4, 2.3.2)	minimum B2		
GISCODE	RE30		
EPD	EPD-DBC-20220176-IBF1-EN		
Exposure scenarios according to REACH	Assessment of industry standard application		

The specified data are values determined under laboratory conditions and are subject to a certain fluctuation. Deviations are possible in practice depending on the respective object situation.

## Epoxy Putties and Adhesives

# WEBAC® 4535 CE

### Preparatory work

#### Structural analysis:

- Inspection of the substrate
  - Moisture condition (dry, damp or wet)
  - Surface strength ( $> 1.5 \text{ MPa (N/mm}^2\text{)}$ )
  - Condition of surface (soiled, oily)

#### This results in:

- Selection of suitable material

Ensure that the temperature limit is maintained before application. Remove all dirt, loose and separative substances from the surfaces. Roughen the surfaces before working on tiles, ceramics or stoneware to improve adhesion.

### Application instruction

- Application by trowel
- The mixture must be used completely within pot life
- Only use pure WEBAC material without any residues of cleaning agents or other impurity
- The pot life/curing time are influenced by the amount of material/layer thickness and the temperature of the material/building structure – higher temperatures accelerate, lower temperatures slow down the reaction

### Mixing

- Empty component B in the container of component A (make sure the containers are completely empty) and mix homogenously
- Transfer mixed material to another clean mixing vessel and stir briefly

### Application

#### Patching

- For patching apply a layer  $\approx 10 \text{ cm}$  wide and at least  $3 \text{ mm}$  thick to the entire crack area (also consider subsidiary cracks)
- Depending on the crack course, leave  $\approx 3 - 5 \text{ cm}$  long sections at the highest points of the crack unpatched to allow the air in the crack to vent

#### Gluing of Sealing Tape

- Apply a  $2-3 \text{ mm}$  thick layer of the adhesive to the pretreated substrate with a flat trowel or serrated trowel
- Embed **WEBAC® Sealing Tape XT** in the fresh adhesive layer and apply a second layer to the adhesive zone of the inserted sealing tape

For detailed information see installation instruction of **WEBAC® Sealing Tape XT**.

### Final work and cleaning

- After the material is cured, knock off patching if necessary and remove packers (e.g. by hot air gun)
- Clean the equipment with **WEBAC® Cleaner A**
- Use **WEBAC® Cleaner B** for dissolving cured material
- Observe the technical data sheets of the cleaners used

**WEBAC-Chemie GmbH**  
 Fahrenberg 22  
 22885 Barsbüttel  
 Germany  
 Tel. +49 40 67057-0  
 Fax +49 40 6703227  
 info@webac.de

[www.webac.de](http://www.webac.de)

# Epoxy Putties and Adhesives

**WEBAC® 4535** 

Product data			
Material consumption	Patching	≈ 0.5 kg/m	
	Gluing	≈ 0.8 kg/m	
Delivery form		Comp. A 2 kg	Comp. B 1 kg
Storage	<ul style="list-style-type: none"> <li>Between 8 °C and 25 °C</li> <li>Protected from moisture</li> <li>In original, sealed containers</li> </ul>		
Compatibility	<ul style="list-style-type: none"> <li>Compatible with masonry mortar, concrete, steel, foil, cable sheathing, metal and WEBAC injection materials</li> </ul>		
Resistance	<ul style="list-style-type: none"> <li>Specially resistant to structurally damaging salts, acids and alkalis</li> </ul>		

WEBAC-Chemie GmbH  
 Fahrenberg 22  
 22885 Barsbüttel  
 Germany  
 Tel. +49 40 67057-0  
 Fax +49 40 6703227  
 info@webac.de

[www.webac.de](http://www.webac.de)

## Occupational safety

The safety regulations of the industrial trade associations and the WEBAC Safety Data Sheets are to be observed at all times when working with this product. Safety data sheets according to Regulation (EC) No. 1907/2006 (REACH) must be accessible to all persons responsible for occupational safety, health protection and the handling of materials. For further information, please see the separate information sheet "Occupational Safety" in our product catalog or [www.webac.com](http://www.webac.com).

## Waste disposal

In Germany, empty containers can be disposed of via "Interzero Circular Solutions Germany GmbH" observing the respective terms and conditions. It is not possible to dispose of containers at production facilities or delivery warehouses. For more detailed information, please see the separate information sheet "Disposal Notes" in our product catalog or [www.webac.com](http://www.webac.com) and the safety data sheets.